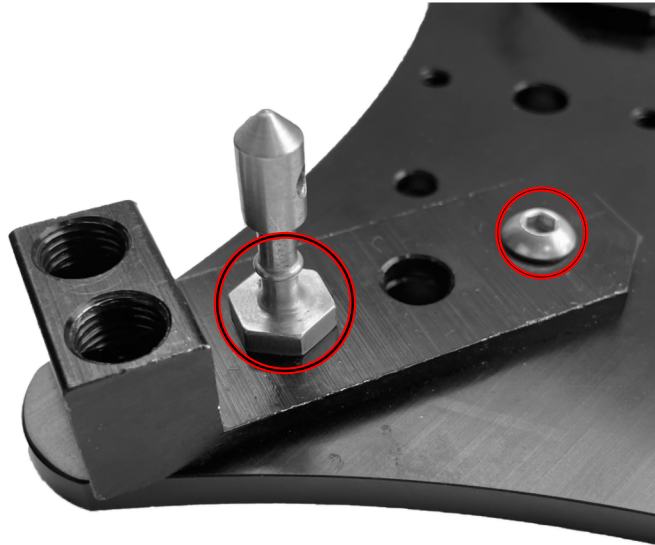


PTZ VIBRATION ISOLATOR ASSEMBLY INSTRUCTIONS.

1.



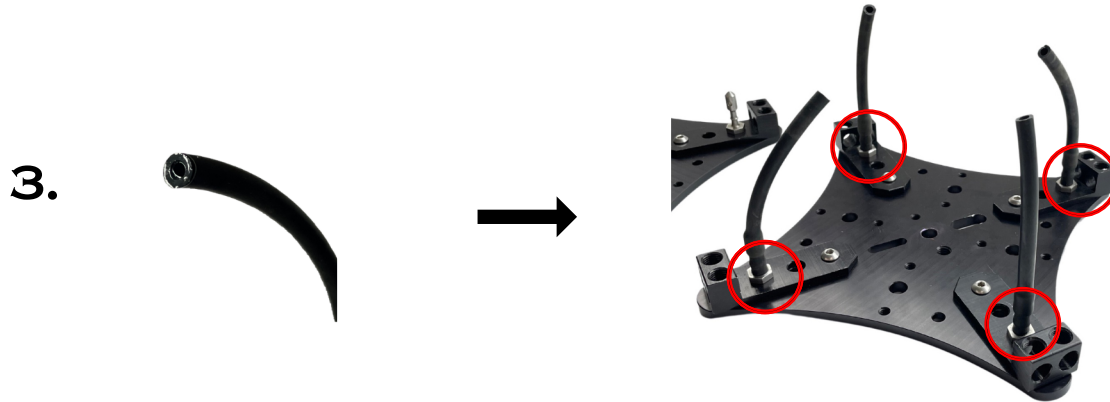
ATTACH ALL 8 CABLE CLAMPS TO THE CORNERS OF BOTH PLATES AS PICTURED ABOVE.

2.

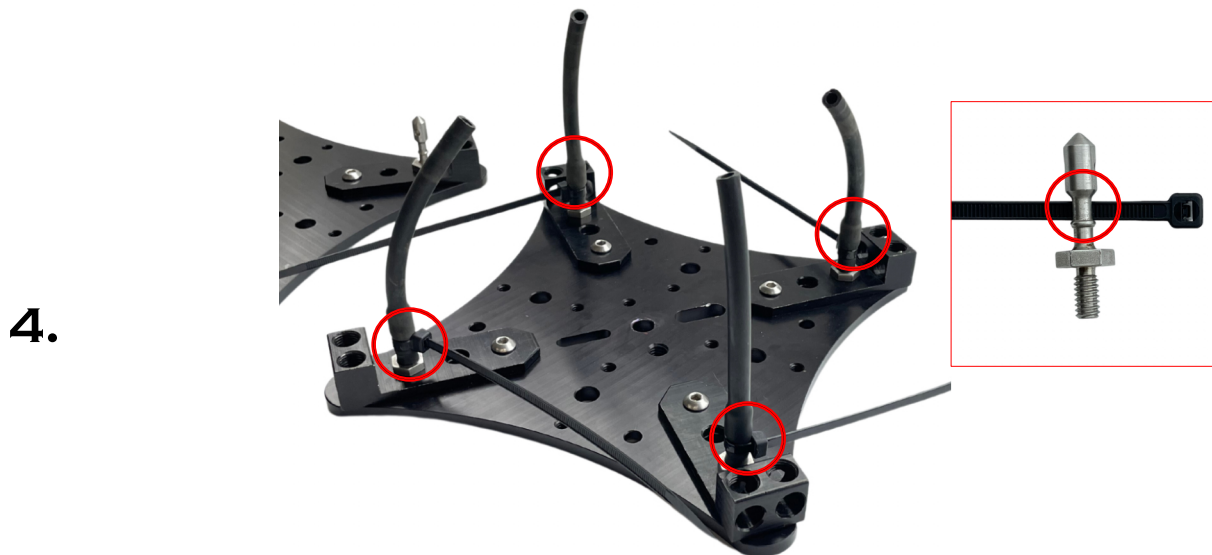


CUT 4 PIECES OF ELASTIC TUBE. WE RECOMMEND TO START AT 4.5" BUT THIS SIZE CAN BE SHORTER FOR HEAVY CAMERAS AND LONGER FOR LIGHT CAMERAS.

PTZ VIBRATION ISOLATOR ASSEMBLY INSTRUCTIONS.



PUT A DAB OF DISH SOAP (OR SALIVA) ON THE ENDS OF THE TUBES AND PUSH THEM ONTO THE 4 TUBE CONNECTORS OF ONE PLATE.



SECURE THE TUBES USING CABLE-TIES JUST BELOW THE "BULB" OF THE TUBE CONNECTORS.

PTZ VIBRATION ISOLATOR ASSEMBLY INSTRUCTIONS.

5.



THREAD SET-SCREWS INTO THE CABLE-CLAMPS ON OPPOSITE CORNERS OF EACH PLATE.

(ADDITIONAL SET-SCREWS ARE INCLUDED FOR CUSTOMIZATION)

6.

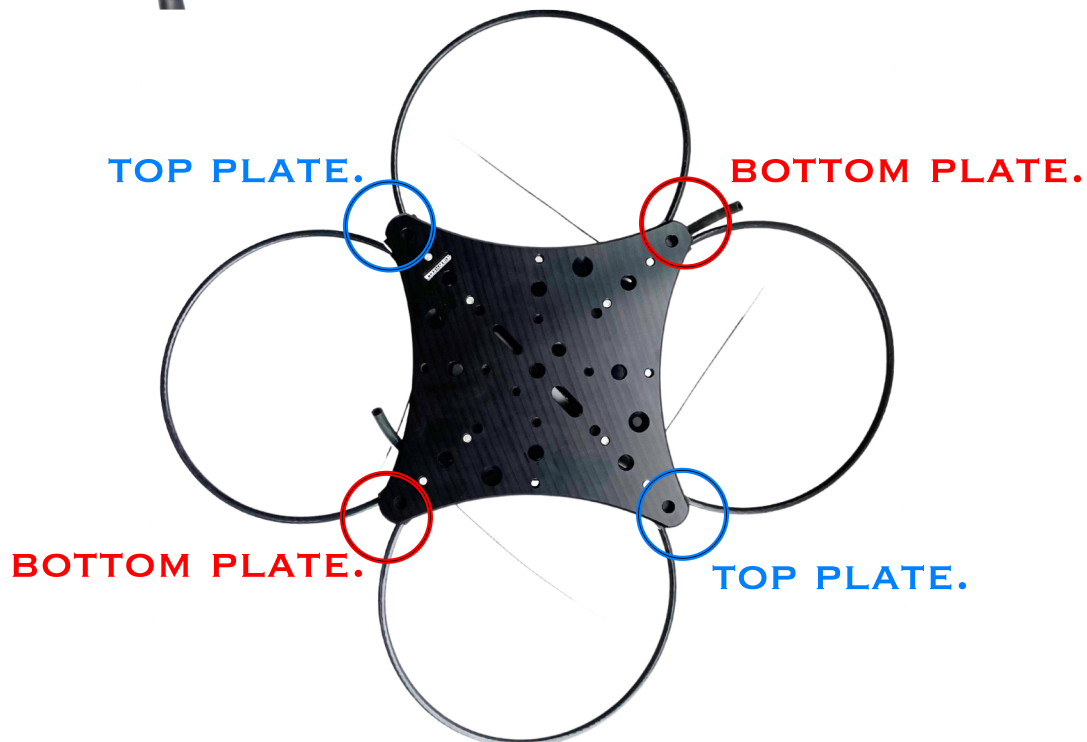
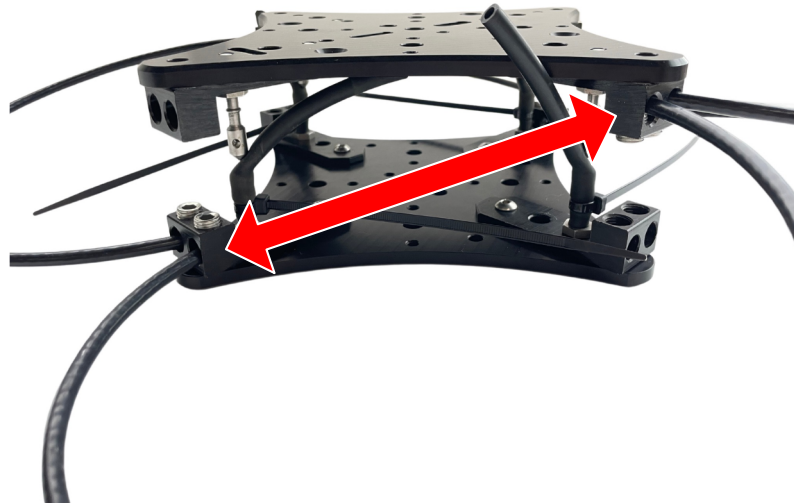


INSERT AND FINGER TIGHTEN 4 CABLES INTO THE PLATE WITH THE TUBES ATTACHED.

(ADDITIONAL CABLES ARE INCLUDED FOR CUSTOMIZATION)

PTZ VIBRATION ISOLATOR ASSEMBLY INSTRUCTIONS.

7.



**PLACE THE SECOND PLATE ON-TOP OF THE FIRST.
THE CABLE CLAMPS WITH SET-SCREWS SHOULD BE
ON THE OPPOSITE AXIS TO THE BOTTOM PLATE.
INSERT THE CABLES INTO THE CLAMPS ON THE
TOP PLATE AND FINGER TIGHTEN.**

PTZ VIBRATION ISOLATOR ASSEMBLY INSTRUCTIONS.

8.



ATTACH THE LOOSE ENDS OF THE TUBES TO THE CONNECTORS OF THE TOP-PLATE AND SECURE WITH CABLE-TIES.

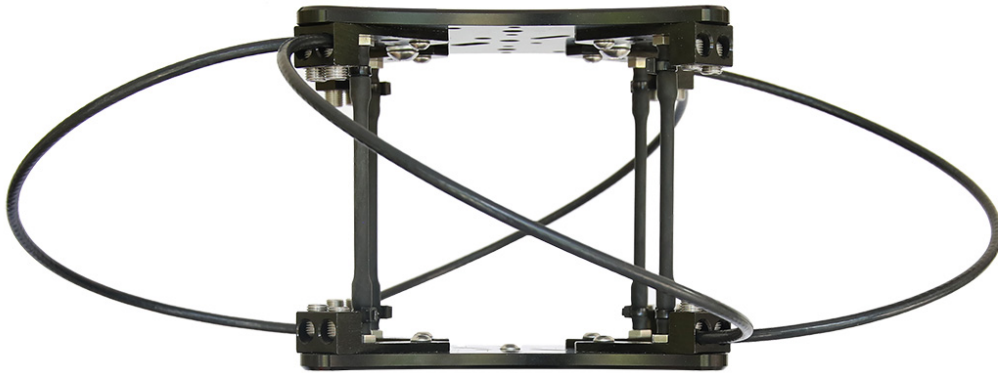
9.



FIRMLY TIGHTEN ALL 8 SET-SCREWS ONTO THE CABLES.

PTZ VIBRATION ISOLATOR ASSEMBLY INSTRUCTIONS.

10.



CUT THE EXCESS PORTION OF THE CABLE-TIES AND THE ISOLATOR IS NOW COMPLETE IN ITS STANDARD CONFIGURATION.

FURTHER ADJUSTMENT

WE INCLUDE ADDITIONAL PARTS AND MATERIAL SO YOU CAN ADJUST THE ISOLATOR TO THE AMOUNT OF WEIGHT YOU WILL BE PLACING ON THE MOUNT.

TO ACHIEVE THE MOST ISOLATION POSSIBLE, YOU WANT THE ISOLATOR AS "SOFT" OR "LOOSE" AS IT CAN BE WHILE NOT "SWAYING" OR "ROCKING" DUE TO PANNING/TILTING OF THE PTZ CAMERA.

-SOFTENING THE ISOLATOR IS ACHIEVED BY LENGTHENING TUBES AND CABLES.

-FIRMING UP THE ISOLATOR IS ACHIEVED BY SHORTENING TUBES AND CABLES AND/OR ADDING ADDITIONAL CABLES.